



Meeting Title: June 2021 TANC Meeting

Meeting Date/Time: June 17, 2021/6:32pm

Attendees: Emily, Lena Hackett, Carlette Duffy, David Bacon, Andrea Drygas, Bradley Keen, Brenda McAtee, Dfisher, Kelli Mirgeaux, LeRoy King, Lisa Laflin, Rhiannon Edwards (PACE Indy), Rhonda, Stephen Bailey, Yvonne Kirk, unknow phone number, Manuel Alarcon Nava

Facebook views: 30 views, 5 comments, 1 share

| Agenda Topic: | Notes: | Action Items (What, who, timeline, etc.): |
|---|--|--|
| Welcome | Outlines the agenda for the meeting | None |
| Marion County Re-entry Coalition Presentation | The Marion County Re-Entry Coalition is not a city agency. They track % reentrants released within 6 and 12 months and % reentrants released to Marion County from IDOC who returned to IDOC within 6 and 12 months to measure the impact of the Coalition. The coalition has multiple different work groups with different focus. One of their notable plans is to incorporate Reentry house specialists with property managers and landlords. Membership to the coalition is open to any person who is engaged with the issue of Re-entry. | Contact information: Lena@communitysolutionsinc.et |
| City of Indianapolis Office of Public Health and Safety (DPHS) CJC Reentry Space Proposal | Carlette explained the history and mission of the Re-entry division; like increasing employment, housing, and resource opportunities. Rhonda asked about the impact homelessness has on recently released individuals. Jail Exit survey showed that the population is mainly male; most individual being 24-27, and 69% of people in the jail | Contact information: Carlette.duffy@indy.gov |



| | | |
|---|---|--|
| | <p>have children with most saying that they have 1-3 children. 54% said that they are pre-trial. 61% said that they had prior felonies. For those surveyed, they said that the top three sources they really need are: employment, housing, and transportation.</p> | |
| <p>Community Action of Greater of Indianapolis (CAGI) Community Pandemic Wellness Initiative</p> | <p>Community Pandemic Wellness Initiative is a response to combat the impact on our black and brown communities due to COVID-19. One the goals is to build a better relationship with the community and increase localize access to health resources. Their focus is on senior city homes, affordable homes, black and latinx communities. They aim to help uplift community spaces to create hubs for health, wellness, and educational resources. There will be a health wellness fair at New Vision Church on July 31st!! One of the goal is to increase the amount of people involved with the hubs to help connect people to these resources.</p> | |
| <p>SEND Updates - Community Space Survey Reminder</p> | <p>Reminder to take community space preference survey!</p> | <p>https://www.surveymonkey.com/r/582XZQG (Spanish com. Space) https://www.surveymonkey.com/r/HGVP3RX (English com. Space)</p> |
| <p>Community Updates</p> | <p>Citizens Energy group need meter readers</p> | <p>Share part-time employment opportunity with Citizens Energy group on social media.</p> |



Expungement Event with Re-entry Division June 18, 12-4!

TANC is looking for more volunteers to connect with more community members.

Our current President will be stepping down from his position.

We will need to look for a new president!

Share expungement event on social media.

Promote/look for community residents/volunteers to join TANC and possibly serve as president.



TWIN AIRE NEIGHBORHOOD COALITION MEETING

June 17, 2021



Meeting Agenda:

- Welcome
- Marion County Re-Entry Coalition (MCRC) Presentation
- City Of Indianapolis Office of Public Health and Safety (OPHS) CJC Reentry Space Proposal
- Community Action of Greater of Indianapolis (CAGI) Community Pandemic Wellness Initiative
- SEND Updates
 - *Community Space Survey Reminder*
- Community Updates





MARION COUNTY RE-ENTRY COALITION (MCRC)



MARION COUNTY RE-ENTRY COALITION

MCRC OVERVIEW

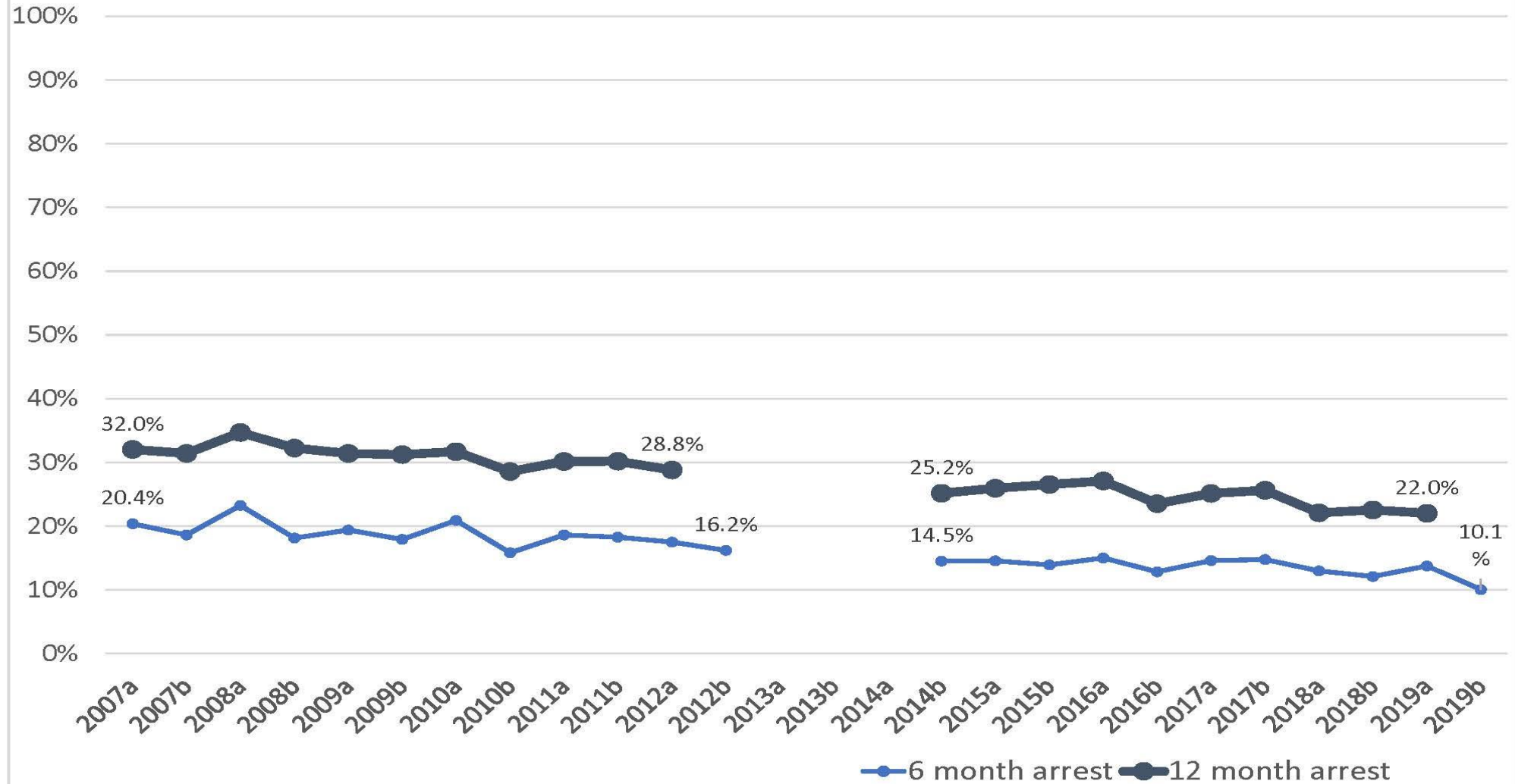
2021

OVERALL TARGETED RESULT

“All Adults in Marion County Involved in the Justice System are Successfully Integrated into the Community.”

Priority Focus is Disproportionate Impact across the system on People of Color.

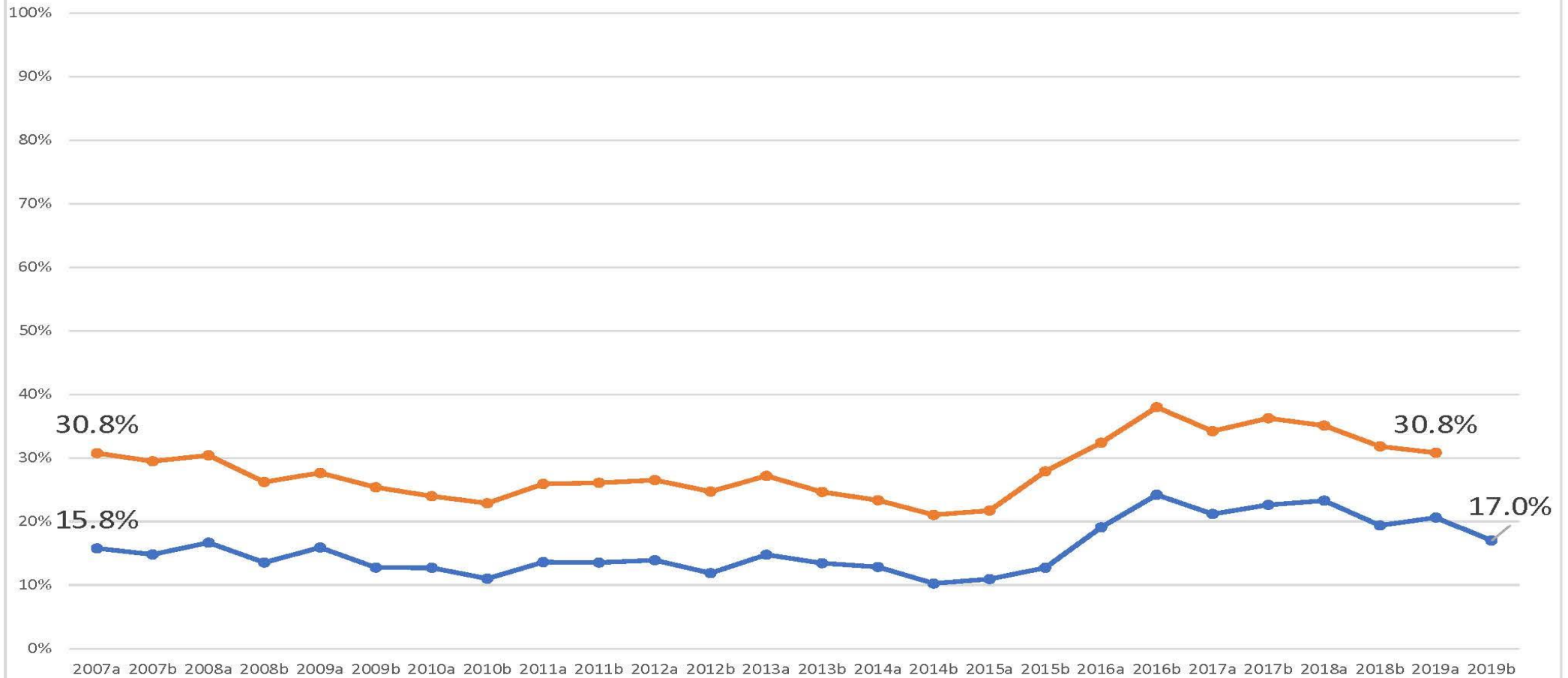
% Reentrants Released to Marion County from IDOC who were Arrested on a New Charge within 6- or 12-months



Release cohorts by 1st and 2nd half of each year.

Data Source: Data provided by Indiana Department of Correction and Marion County Sheriff's Office to and analyzed by Community Solutions, Inc. (updated 09/2020).

% Reentrants Released to Marion County from IDOC who Returned to IDOC for any Cause within 6- or 12-months



Release cohorts by 1st and 2nd half of each year.

Data Source: Data provided by Indiana Department of Correction to Community Solutions, Inc. (updated 09/2020).

● 6 month return ● 12 month return

WORK GROUPS

- Services
- System Re-Design
- Education and Employment
- Housing
- Policy
- Other MCRC Working Groups:
 - Steering Committee
 - Conference Planning Committee
 - Communications Taskforce

FOCUS AREAS

| Current Strategy Focus | Work Group |
|---|--------------------------|
| Re-entry services upon exit from Marion County Jail – Design of the “Reentry Space” ECHO | Services |
| Pretrial Program Wholistic Defense | System Redesign |
| Alternate Tenant Selection Plan Reentry Housing Specialist | Housing |
| Transitional Jobs | Education and Employment |
| Bail Reform | Policy |

MEMBERSHIP

Membership is open to any person who is engaged in the issue of Re-entry and who commits to the Framework, Targeted Result, and Indicators of Success. Currently, MCRC includes members from:

Federal Criminal Justice Agencies:

Federal Bureau of Prisons
Office of Congressman Carson
Office of Congresswoman Brooks
United States Probation

State Agencies:

Indiana Department of Correction
Indiana Family & Social Services Administration,
Division of Mental Health & Addiction
Indiana Public Defender Council

For Profit Agencies/Businesses:

Allegiance Staffing
Anthem Indiana Medicaid
CareSource
Mays Chemical

Universities:

Indiana University, Purdue University Indianapolis
Marion University
Indiana Wesleyan University

City/County Agencies:

City of Indianapolis, Office of Public Health and Safety
Indianapolis-Marion County City-County Council
Indy Chamber
Marion County Community Corrections
Marion County Prosecutor's Office
Marion County Public Health Department
Marion County Public Defender Agency
Marion County Sheriff's Office
Marion Superior Court, Probation

Nonprofit, Community-based Agencies

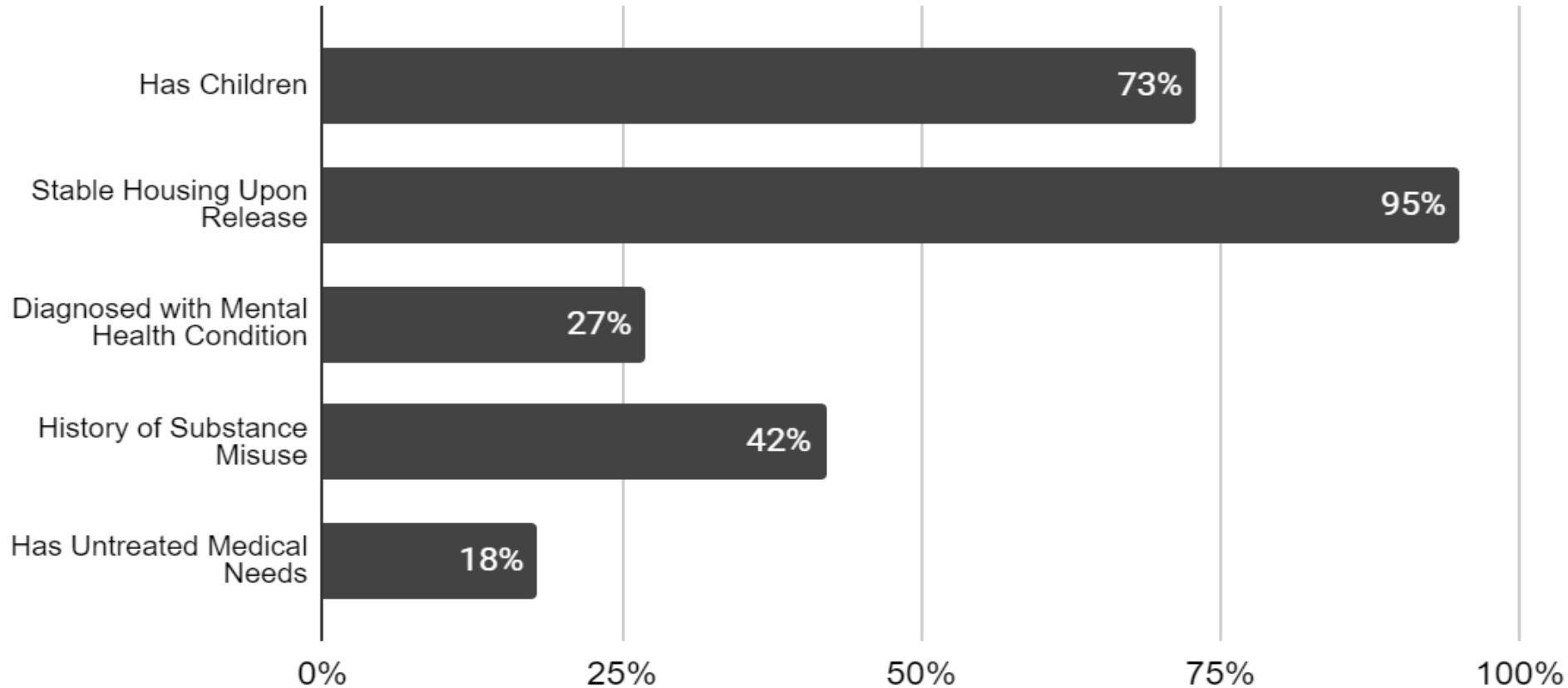
Arc of Indiana
Boys & Girls Club of Indianapolis
Central Indiana Community Foundation (CICF)
Community Action of Greater Indianapolis
Craine House
Damien Center

Edna Martin Christian Center
EmployIndy
Eskenazi/Sandra Eskenazi
Goodwill Industries of Central and Southern Indiana
Horizon House
Indiana Legal Services, Inc.
Indianapolis Legal Aid Society, Inc.
Indianapolis Urban League
Indy Reads
John Boner Neighborhood Center
Neighborhood Christian Legal Clinic
Public Advocates in Community Re-Entry, Inc. (PACE)
RecycleForce
Step-Up, Inc.
Trusted Mentors
United Way of Central Indiana
Use What You've Got Prison Ministry
Volunteers of America of Indiana

TBP Indianapolis: Client Community Needs

Clients share a history of a variety needs and strengths upon release.

Self-Reported Needs Assessment Key Questions



RE-ENTRY SPACE – 24/7

- Pre and Post Release Services
- Early Assessment of Housing Needs
- Collaboration with MCSO Providers
- Collaboration with CBO and FBO partners – case management, connection to employment, etc
- Development of Reentry Plan
- Upon Release:
 - Continue engagement with Reentry Staff
 - Receive “resource packet” – information, emergency supplies, transportation support



MARION COUNTY RE-ENTRY COALITION

CHECK OUT OUR WEBSITE BELOW:

[HTTPS://WWW.MARIONCOUNTYREENTRYCOALITION.ORG](https://www.marioncountyreentrycoalition.org)

lana@communitysolutionsinc.net



CITY OF INDIANAPOLIS OFFICE OF PUBLIC HEALTH AND SAFETY (OPHS)

CJC Re-entry Space Proposal

CJC Reentry Space Proposal

OPHS Division of Reentry



Office of Public Health and Safety

Re-entry Division

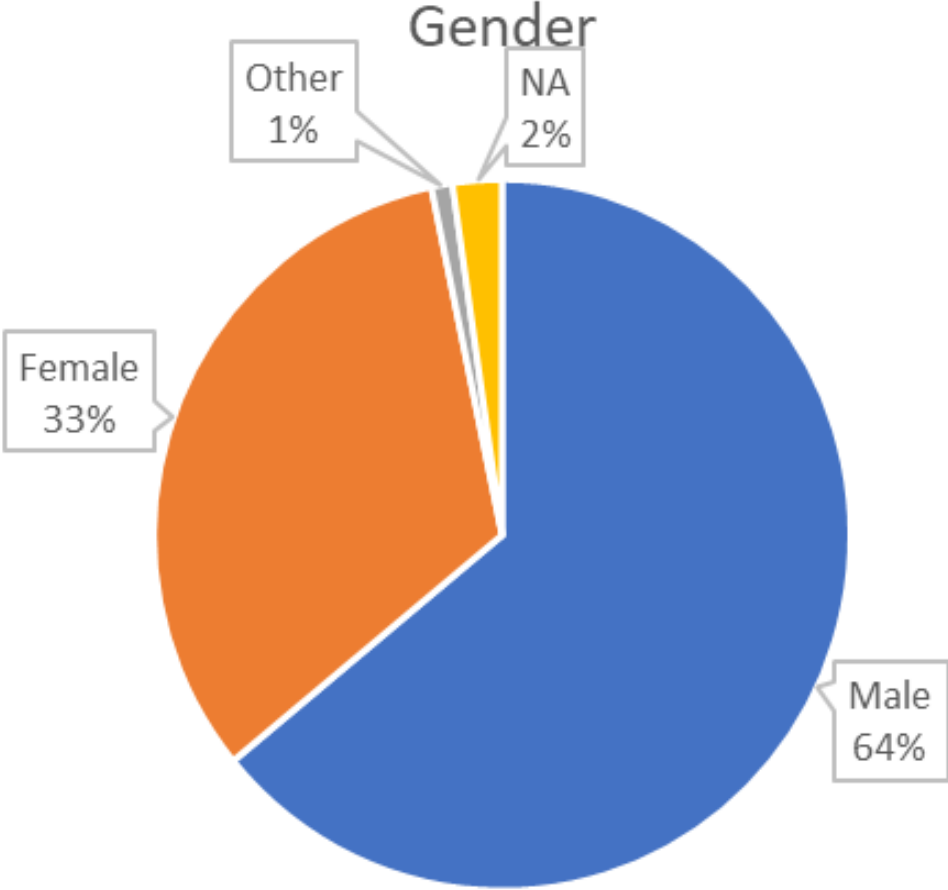
The Re-entry Division of the Office of Public Health and Safety (OPHS) aims to empower formerly incarcerated individuals to get back on their feet, operating from the belief that criminal history should not get in the way of self-sufficiency. The Re-entry Division engages a network of supportive services, especially in housing and employment, to help individuals successfully return to the community. Successful re-entry reduces the number of formerly incarcerated individuals who will cycle back through the criminal justice system by committing repeat offenses. The Division of Re-entry works in conjunction with other OPHS programs around violence reduction, food issues, and homelessness and housing.

Jail Exit Survey

Voice of Who We Serve

Sex

- Male
- Female
- Other

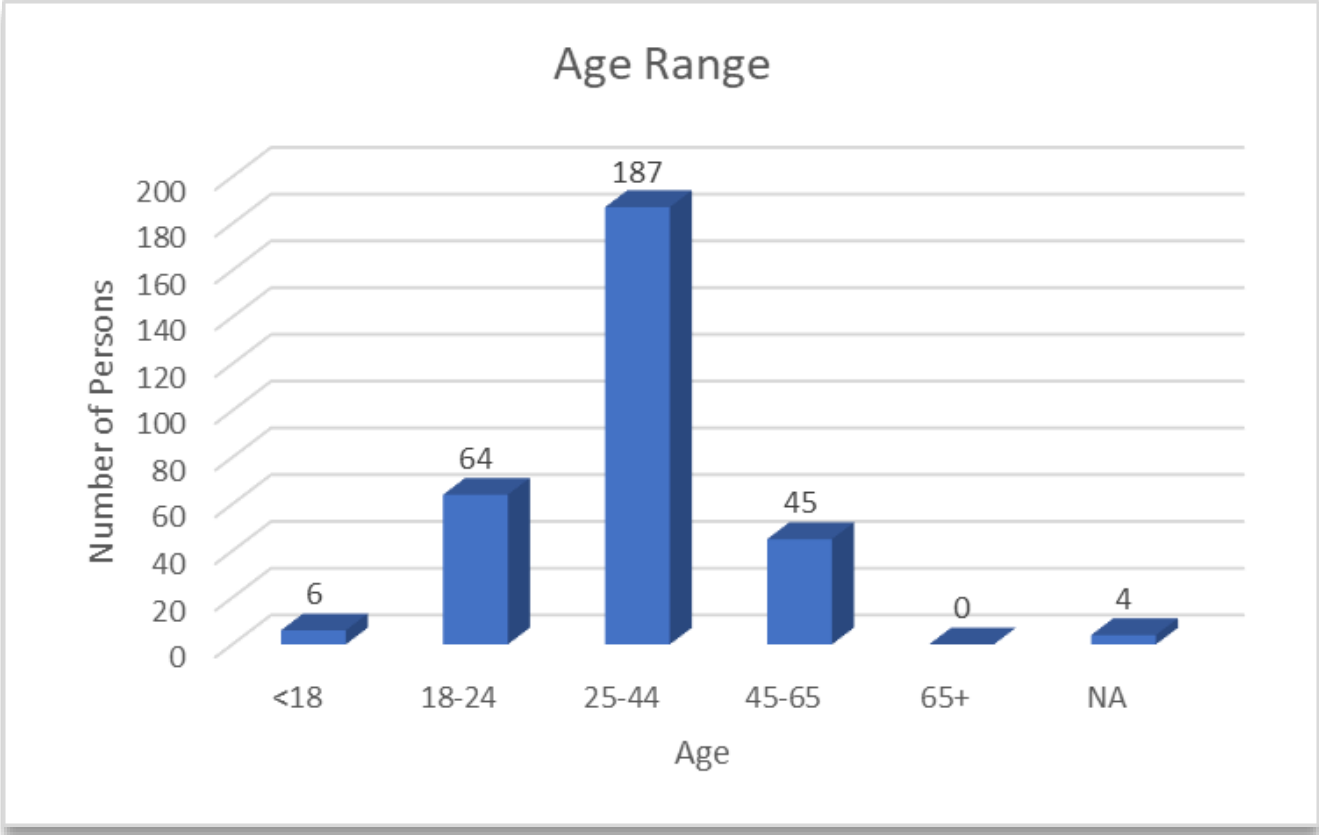


Jail Exit Survey

Voice of Who We Serve

Age

- 18 – 24
- 25 – 44
- 45 – 65
- 65 and up

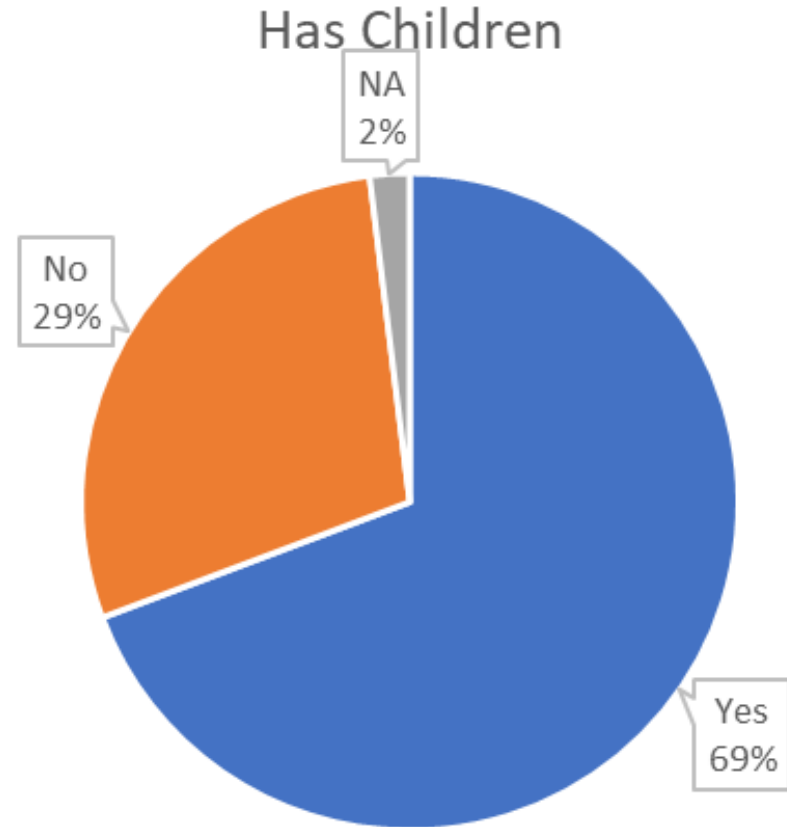


Jail Exit Survey

Voice of Who We Serve

Parent

- Yes
- No

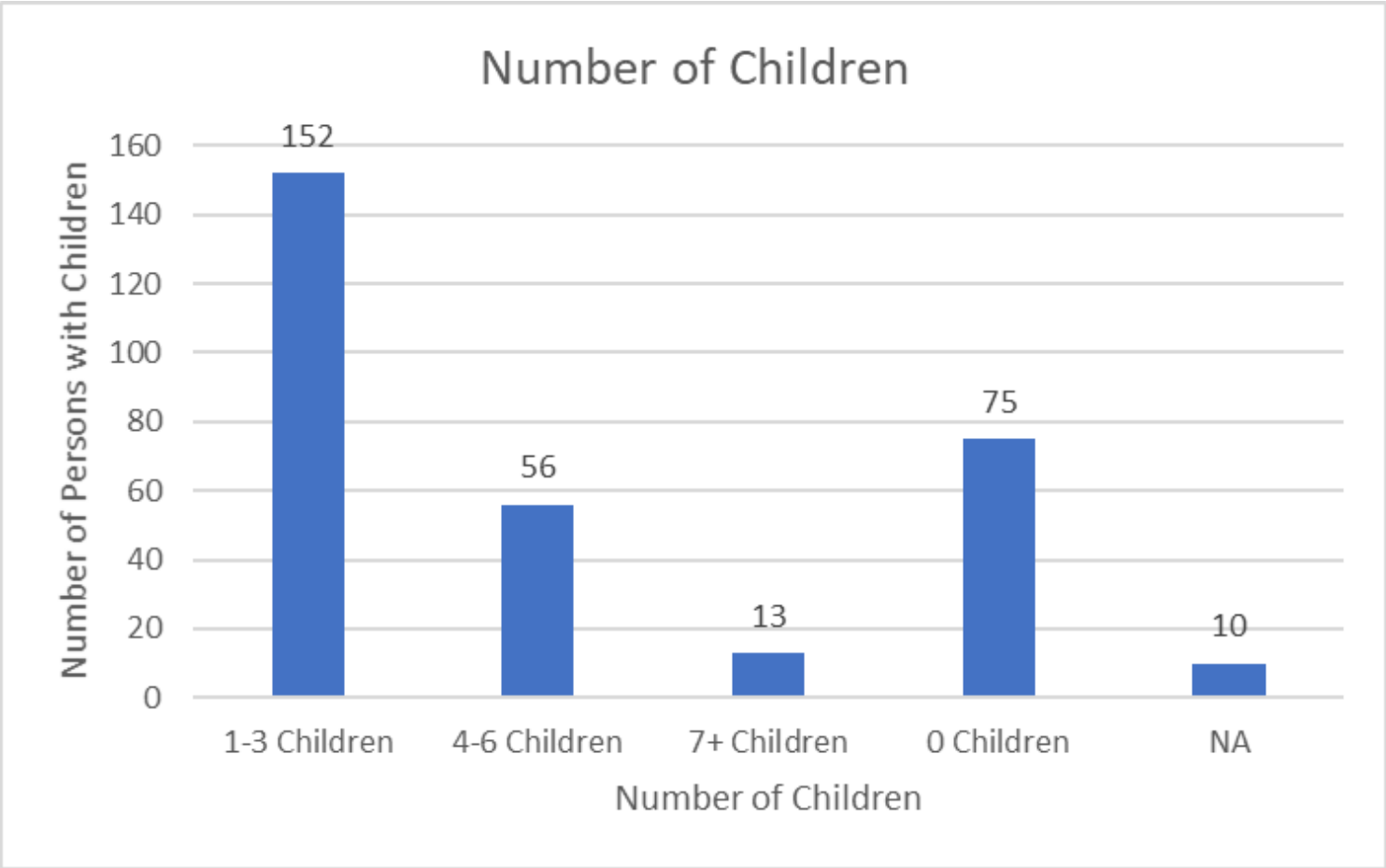


Jail Exit Survey

Voice of Who We Serve

Number of children

- 1 – 3
- 4 – 6
- 7 and up



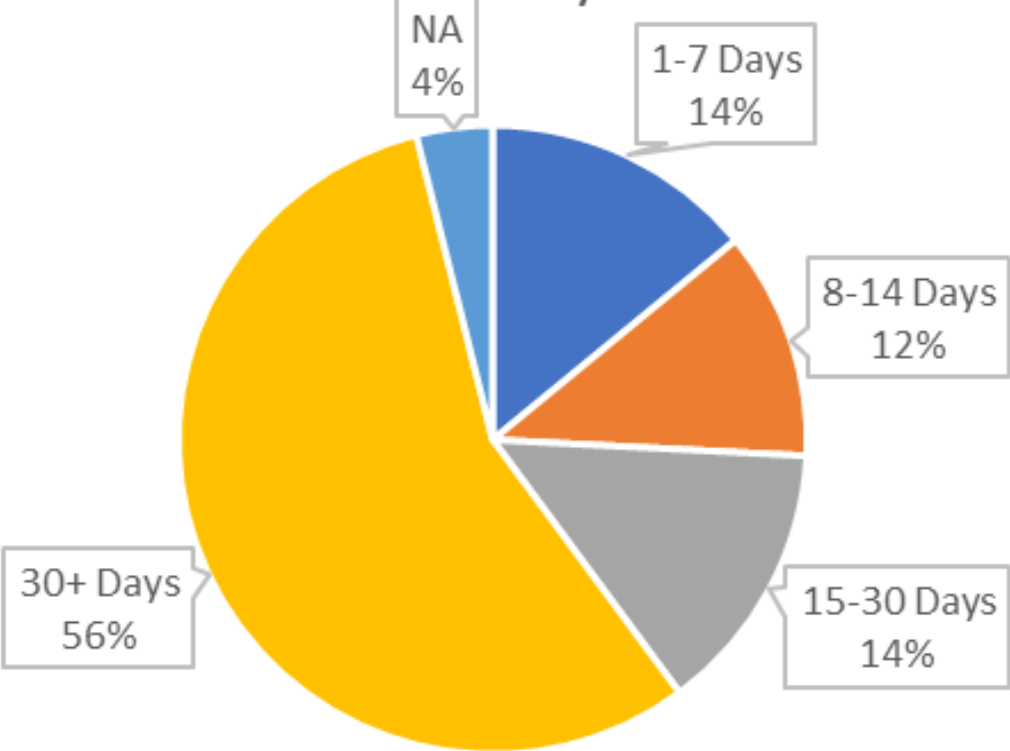
Jail Exit Survey

Voice of Who We Serve

Days in the jail

- 1 – 7
- 8 – 14
- 15 – 30
- 30 and up

Number of Days in Jail



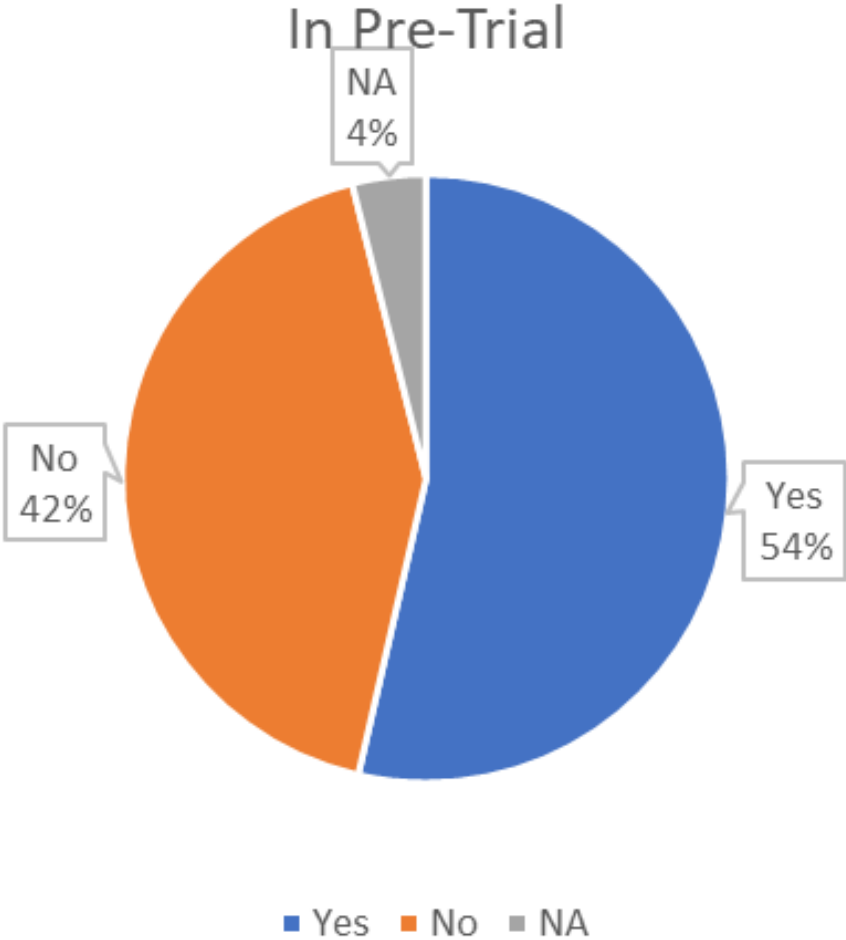
■ 1-7 Days ■ 8-14 Days ■ 15-30 Days ■ 30+ Days ■ NA

Jail Exit Survey

Voice of Who We Serve

Are you pre-trial

- Yes
- No

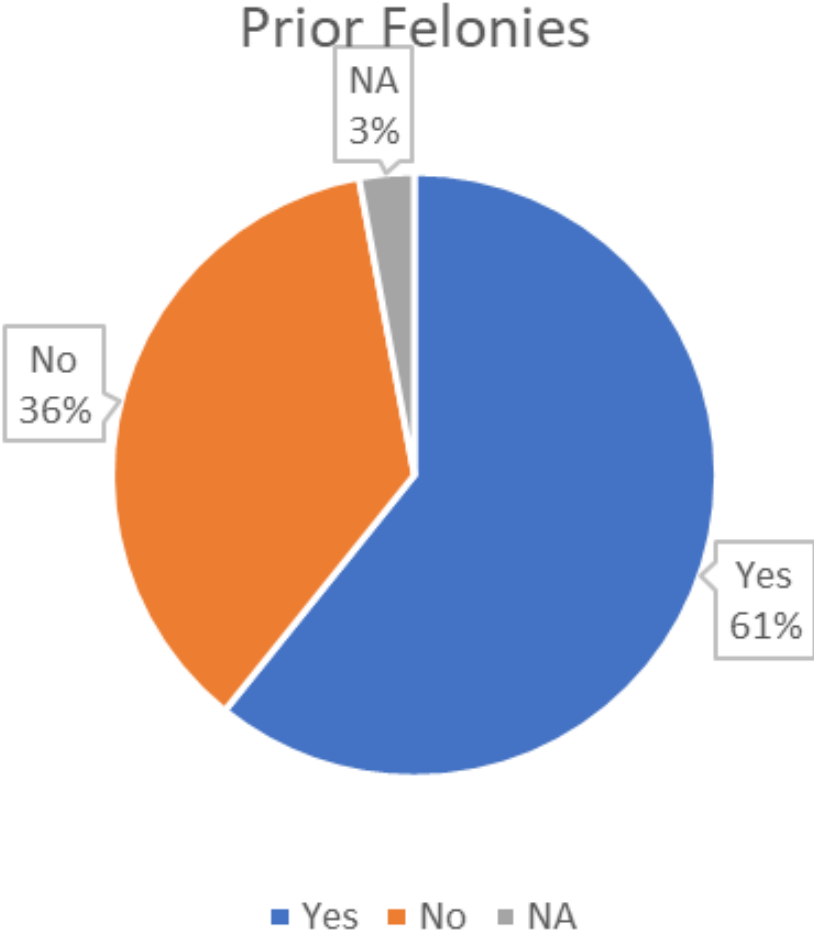


Jail Exit Survey

Voice of Who We Serve

Prior felonies

- Yes
- No

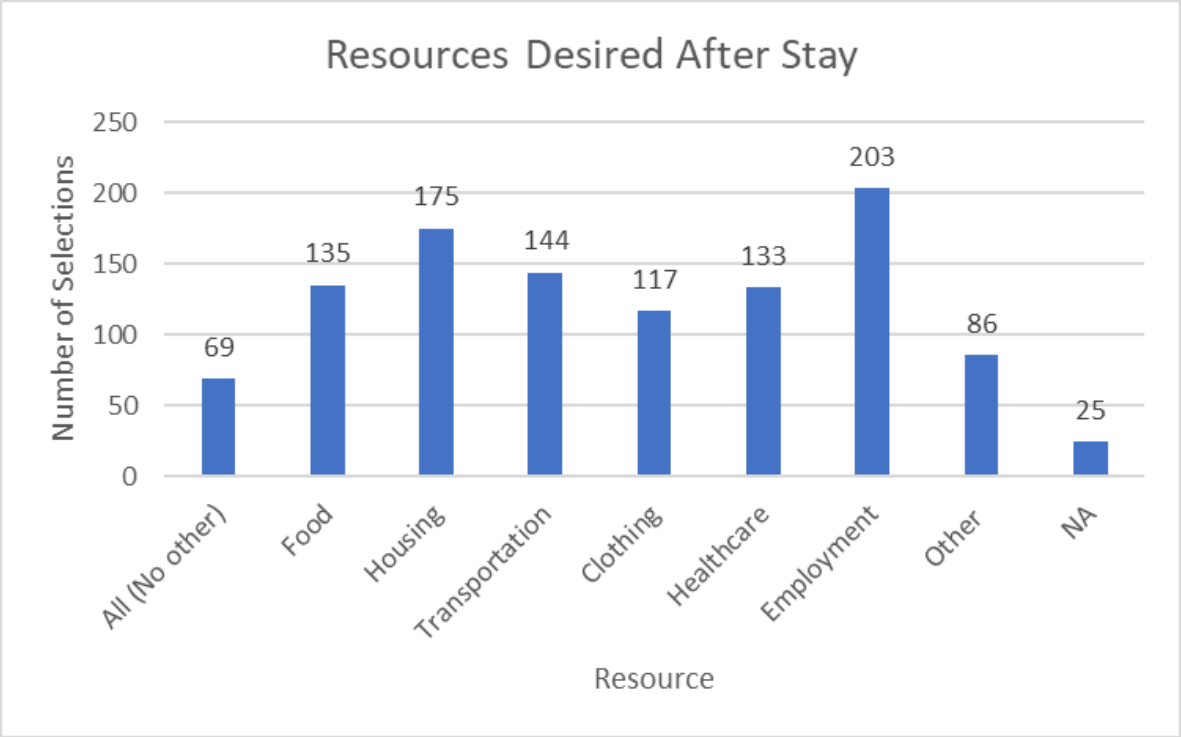


Jail Exit Survey

Voice of Who We Serve

Mark all resources needed after release

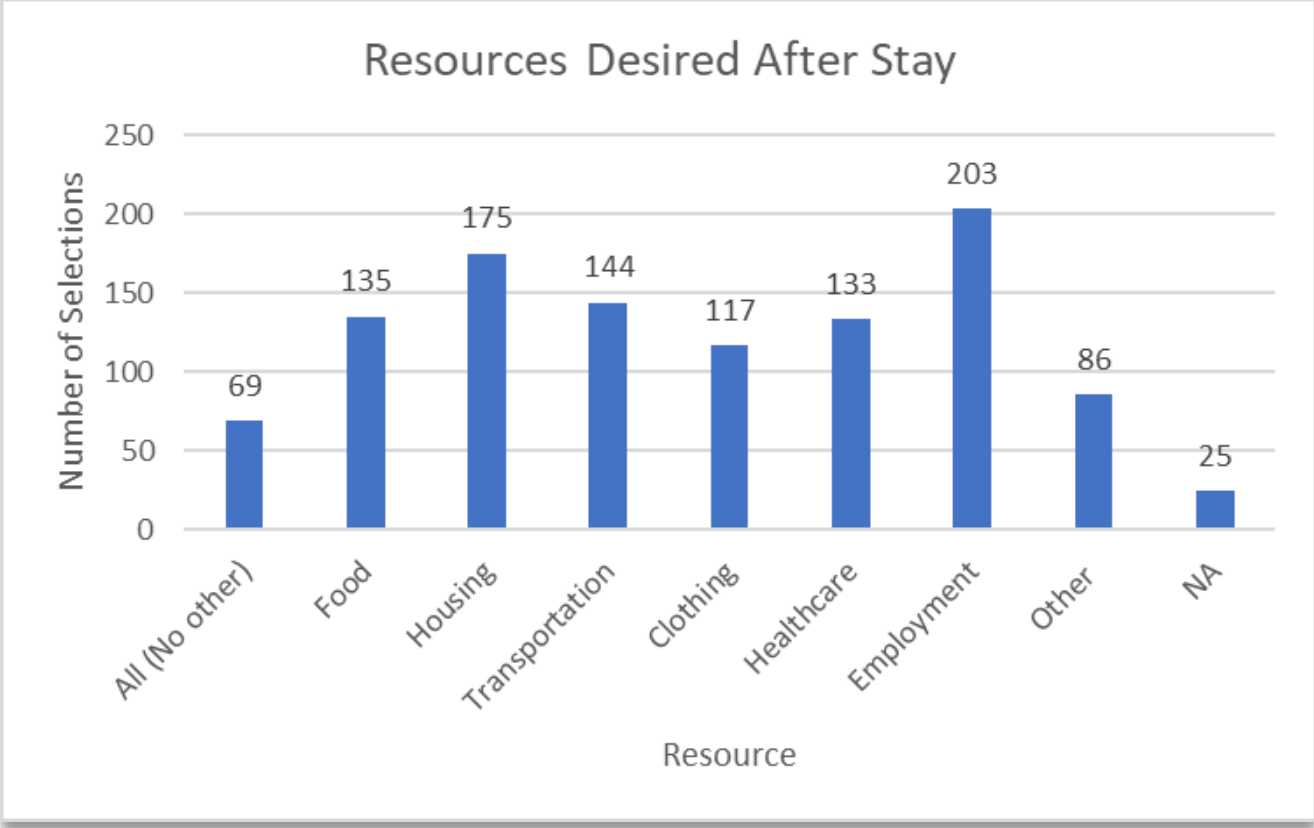
- Food
- Housing
- Transportation
- Clothing
- Healthcare
- Employment
- Other



Jail Exit Survey

Voice of Who We Serve

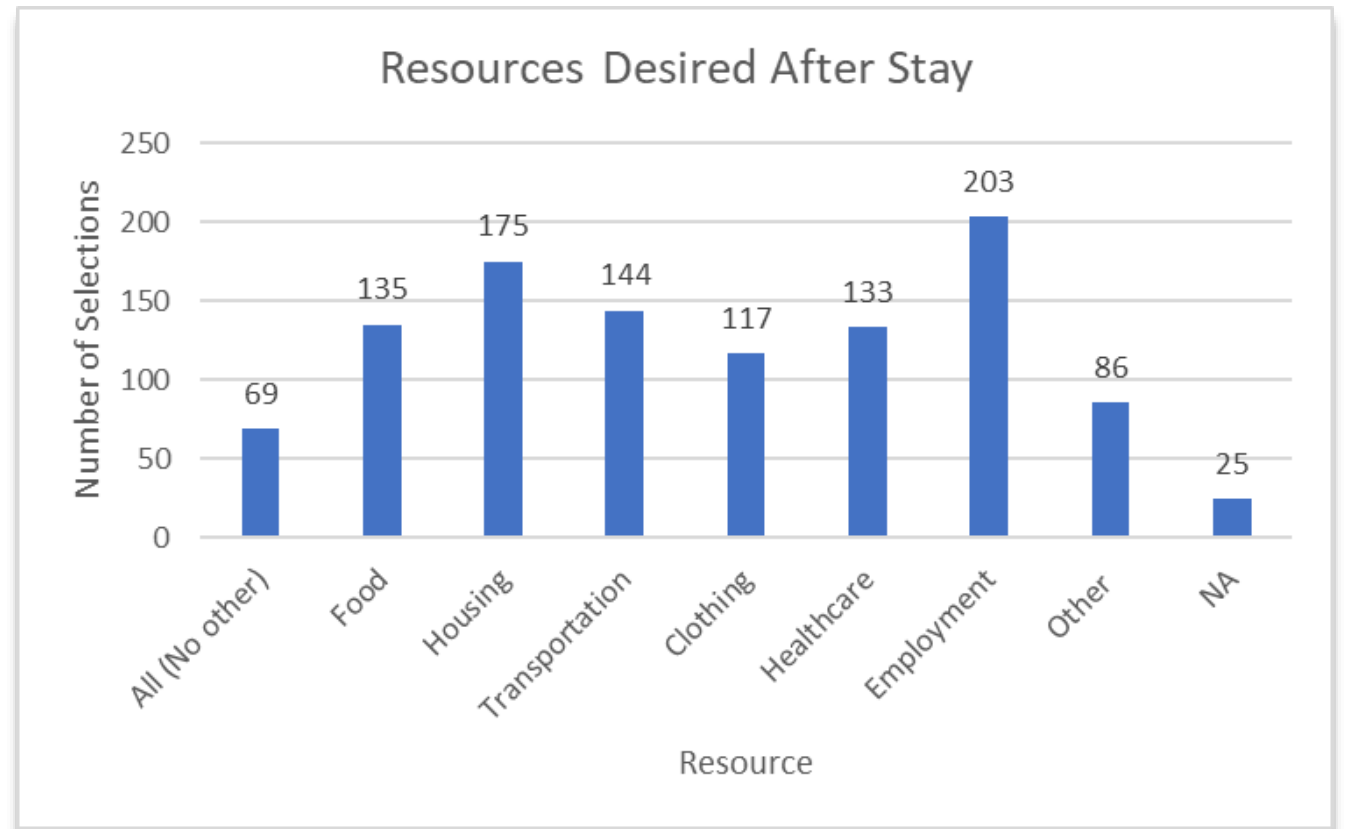
What resources listed above would you stop for before leaving the jail to access?



Jail Exit Survey

Voice of Who We Serve

What resources listed above would you stop for before leaving the jail to access?



Questions?





COMMUNITY ACTION OF GREATER OF INDIANAPOLIS (CAGI)

Community Pandemic Wellness Initiative

CAGI PROJECT

COMMUNITY PANDEMIC WELLNESS INITIATIVE

January 2021 - May/June 2022



October 2020 © LK3Consulting, LLC

PRESENTATION OUTLINE:

- Context
- Goals
- Methodology
- Nuts and Bolts
- Challenges
- Q&A

THE PROBLEM:

- **ADDRESS COVID-19 HEALTH DISPARITIES AFFECTING BLACK AND BROWN COMMUNITIES.**
 - **Higher underlying health conditions.**
 - **High exposure**
 - **Less access to COVID-19 testing**

THE PROJECT'S GOALS:

- **IMPROVE OVERALL HEALTH CONDITIONS.**
- **EMPOWER RESIDENTS WITH STRATEGIES AND THE SUPPORT TO REDUCE AT-RISK EXPOSURE**
- **INCREASE ACCESS TO COVID-19 TESTING**

THE PROJECT'S METHODOLOGY:

RELATIONSHIP and LOCALIZE ACCESS

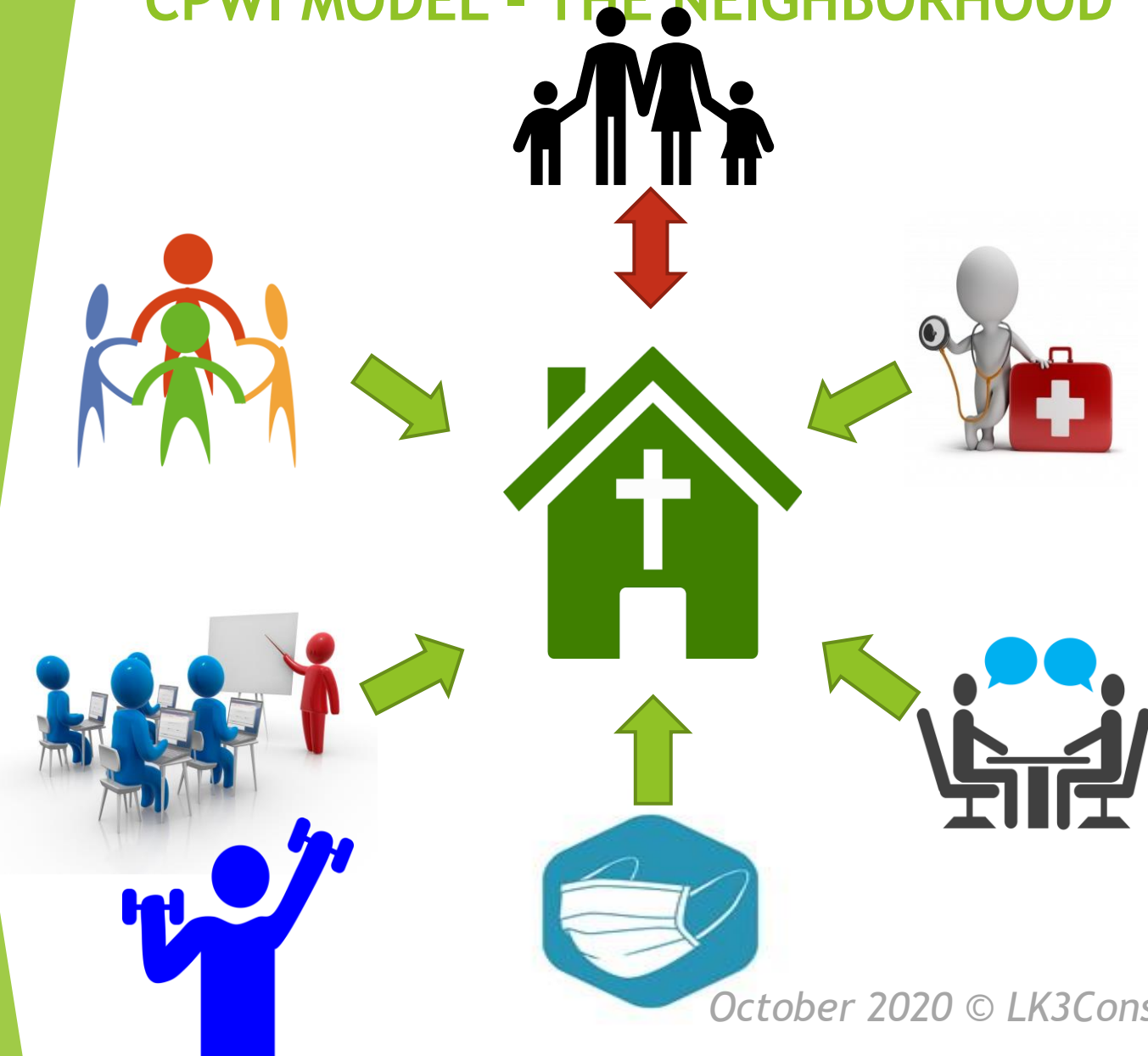
October 2020 © LK3Consulting, LLC

CPWI MODEL



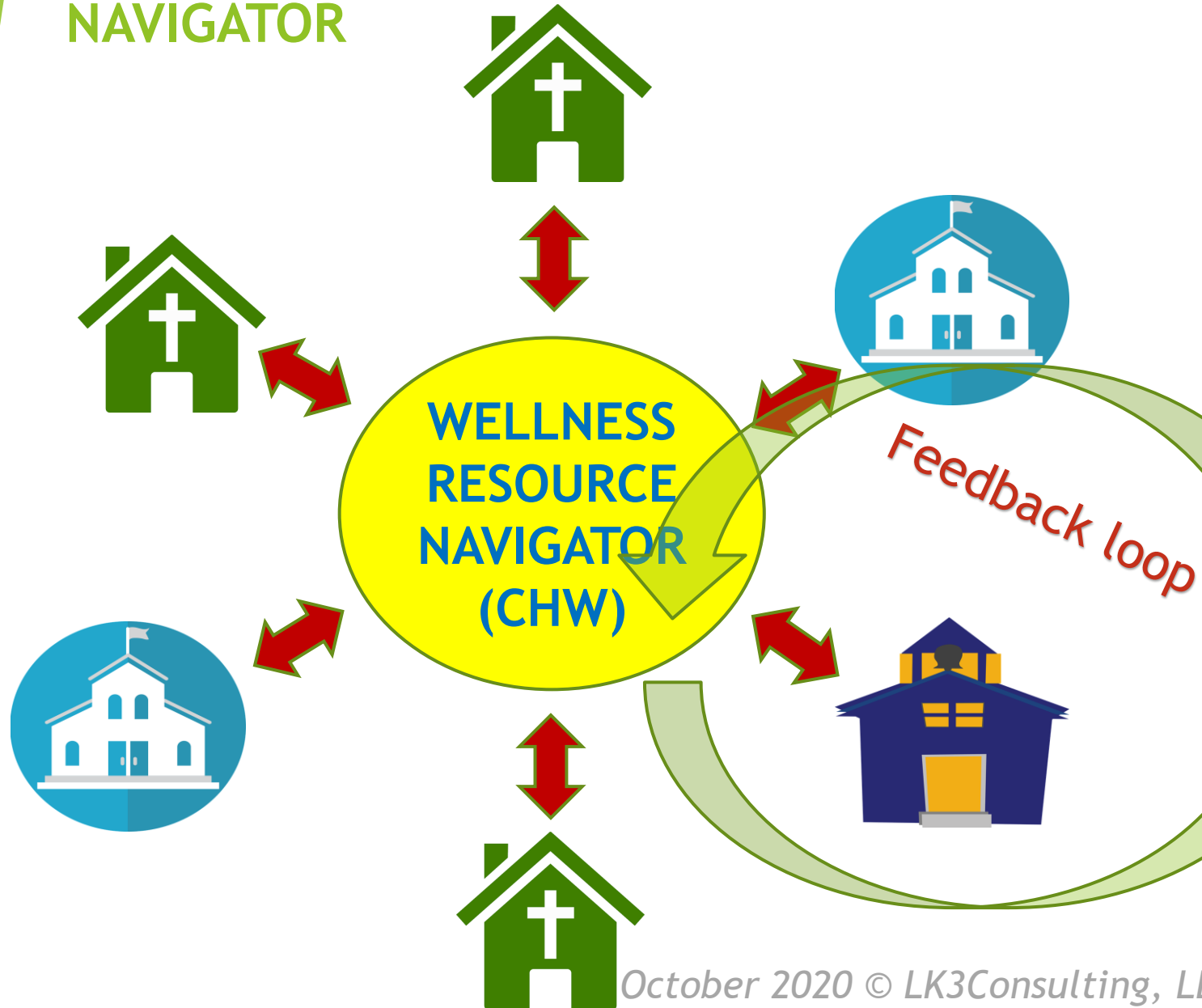
MULTIPLE PREDETERMINED AT-RISK LOCATIONS

CPWI MODEL - THE NEIGHBORHOOD "HUB"



- HOST/HUB SITE
- EDUCATION & INFORMATION DISSEMINATION HUB
- HEALTH & WELLNESS FAIR
- LOCAL RESIDENT & COMMUNITY PARTNER ENGAGEMENT

CPWI MODEL - WELLNESS RESOURCE NAVIGATOR



SUPPORT A NETWORK OF HUBS

RESIDENT ENGAGEMENT

COORDINATE ED/INFO DISSEMINATION & ACTIVITIES

LIAISON BETWEEN HUBS, AGENCIES AND PARTNERS

STRATEGIC PARTNERS AND STAKEHOLDERS SUPPORT:

- **ORIENTATION**
- **ONGOING WORKSHOP/TRAININGS**
- **VIRTUAL KIOSK - PROJECT UPDATES AND INFORMATION DISSEMINATION.**

THE CHALLENGE:

- **EVENTS, ACTIVITIES, AND GATHERINGS IN THE
MIDST OF COVID-19.**

Contact info:
LeRoy King
leroy@lk3consulting.com
web - lk3consulting.com



THANK YOU!

October 2020 © LK3Consulting, LLC



SEND UPDATES



FINAL ANNOUNCEMENTS/ COMMUNITY UPDATES

Emily@sendcdc.org